

Office Property For Lease

Woodruff Professional Offices

3840 Woodruff Avenue, Suite 209, Long Beach, CA 90808



- ▶ 900 Square Feet
- ▶ \$1,125 Per Month Rent
- ▶ 3 Private Offices
- ▶ Private Bathroom
- ▶ Kitchen / Break Room
- ▶ Front Reception Room
- ▶ Receptionist / Billing Area
- ▶ Professional Building
- ▶ Move-In Ready
- ▶ 4.0% Commission!!

Professional office building with 1 unit ready for immediate move-in! Located on Woodruff Avenue just south of Carson Street. Easy access to major freeways and local businesses. This gorgeous turn-key suite has 3 private offices, private bathroom, kitchen / break room, front reception room and a receptionist / billing area. 4.0% Commission offering to Agent! Call Today **562-421-6566!**



Front Reception Room



Receptionist / Billing Area

900 Sq. Ft.
Available Now!!!

4.0%
Commission!!



1 of 3 Private Offices



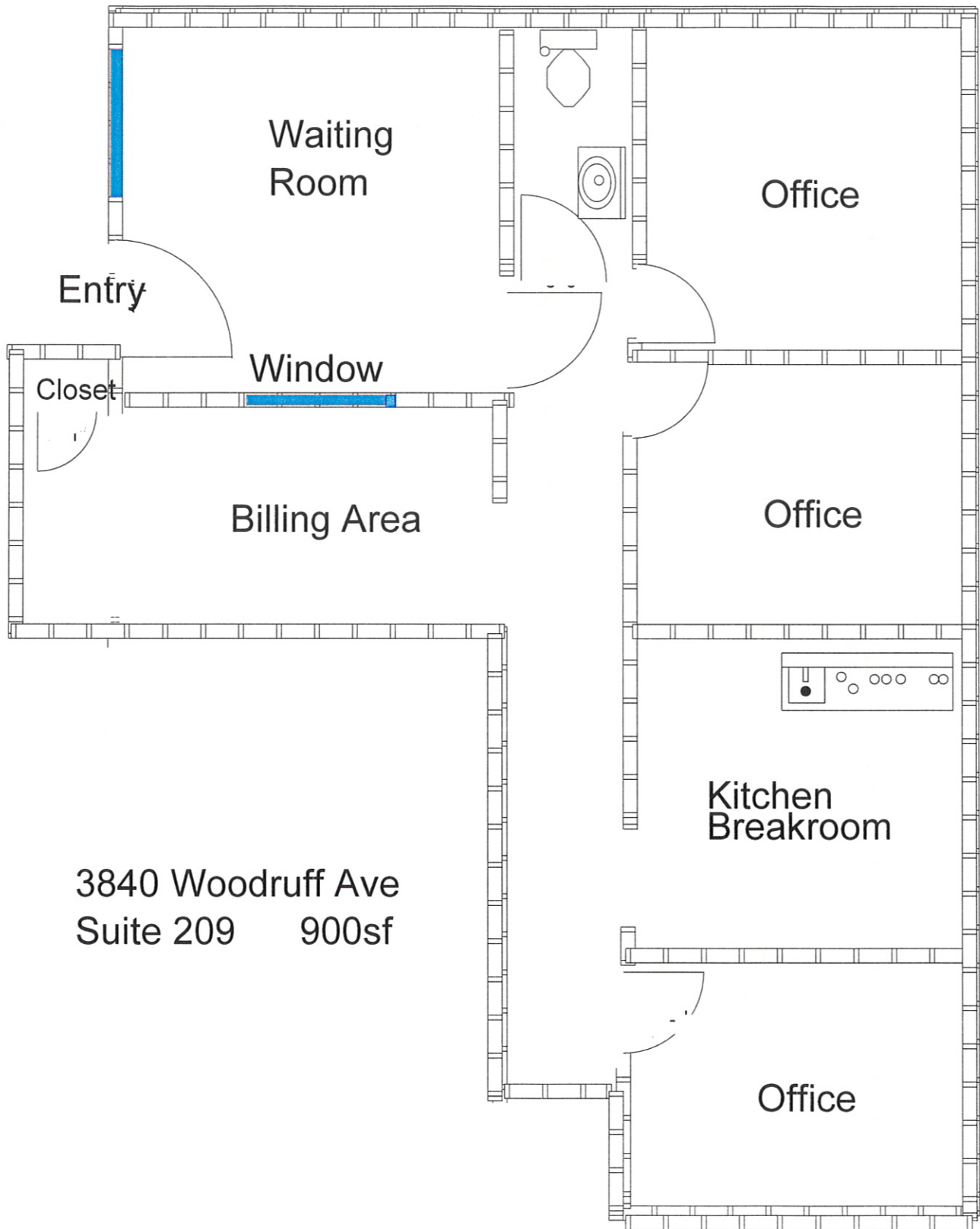
Private Kitchen / Break Room

Jim Ault
Eric Ault
Josh Ault



JAMCO EQUITIES, INC.
Managing & Leasing Commercial Property Since 1993

Phone: 562-421-6566
Fax: 562-425-7916
www.JamcoEquities.com



3840 Woodruff Ave
Suite 209 900sf